



# BORY HOSPITAL REDEFINING HEALTHCARE EXCELLENCE

Peter Lednický





WHAT DOES  
THE HOSPITAL BORY  
BRING TO PATIENTS?



# HOSPITAL IN NUMBERS



Inpatients  
**35,000/year**



Outpatients  
**35,000/year**



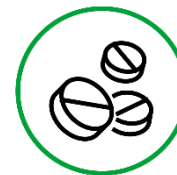
Radiodiagnostics  
**3 CT, 2 MR**



Single-bed standard  
**405 beds**



Deliveries  
**3,500**



Hospital  
pharmacy

# HOSPITAL IN NUMBERS

**14+2**

Operating rooms  
incl. 1 robotic  
& 1 hybrid

**24**

Rooms of the  
multidisciplinary intensive  
care unit for adults

**8**

Labor rooms & family  
focused NICU

**HIS**

Innovative medical and  
operation processes



## Inpatient care specialisations

- Visceral surgery (hepatobiliar)
- Interventional radiology and angiology
- Neurosurgery
- Radiation oncology
- Anesthesiology and intensive care medicine
- Urology (aspiration of a robotic center)
- Clinical oncology
- Neurology
- Gynaecology and Obstetrics
- Breast surgery
- Orthopedics
- Cardiology and interventional cardiology
- Otorhinolaryngology
- Neonatology
- Internal and hospital medicine
- Trauma surgery
- General surgery
- Ophthalmology

- **Oncology program**
- **Neurovascular program**
- **Cardiovascular program**
- **Mother and child program**
- **Orthopaedics & traumatology program**
- **Metabolic and indigestion disorders**

## Outpatient basis & one-day care

- |                             |                           |
|-----------------------------|---------------------------|
| ○ Hematology                | ○ Diabetology             |
| ○ Oncohemtology             | ○ Endocrinology           |
| ○ Gastroenterology          | ○ Pneumology              |
| ○ Hepatology                | ○ Dermatovenerology       |
| ○ Coloproctal surgery (IBD) | ○ Immunology/Allergology  |
| ○ Vascular surgery          | ○ Rheumatology            |
| ○ Plastic surgery           | ○ Psychiatry              |
| ○ Algesiology               | ○ Clinical speech therapy |
| ○ Angiology                 | ○ Clinical psychology     |
| ○ Pediatrics                |                           |

## Complementing clinal departments

- |                                |                             |
|--------------------------------|-----------------------------|
| ○ Emergency                    | ○ Transfusionology          |
| ○ Dialysis                     | ○ Central hospital pharmacy |
| ○ Radiology                    | ○ Central sterilization     |
| ○ Nuclear medicine             |                             |
| ○ Endoscopic workplaces        |                             |
| ○ Physiatry and rehabilitation |                             |

# MULTIDISCIPLINARY APPROACH

1. Mother and child program
2. Oncology program
3. Neurovascular program
4. Cardiovascular program
5. Orthopedics and traumatology program
6. Metabolic and indigestion disorders



# HOSPITAL INFORMATION SYSTEM (HIS) AND MOBILITY

- Triage
- Bed management
- Surgery theatres management
- Innovative procedures in nursing care
- Patient identification via 2D codes



# HOSPITAL PHARMACY





# PNEUMATIC TUBE SYSTEM

Transport of:

- Medical material
- Medicines
- Blood
- Small medical equipment

Speed: 5m/s

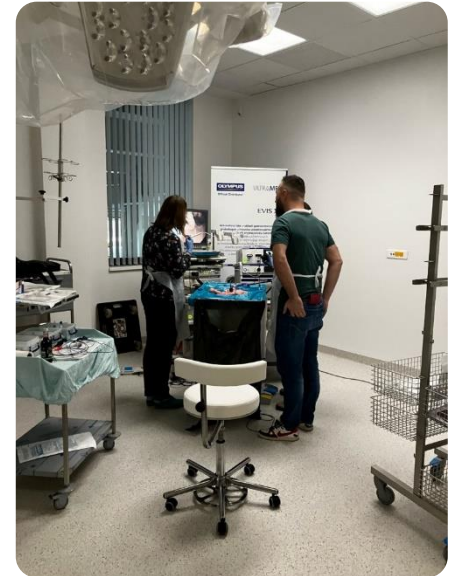
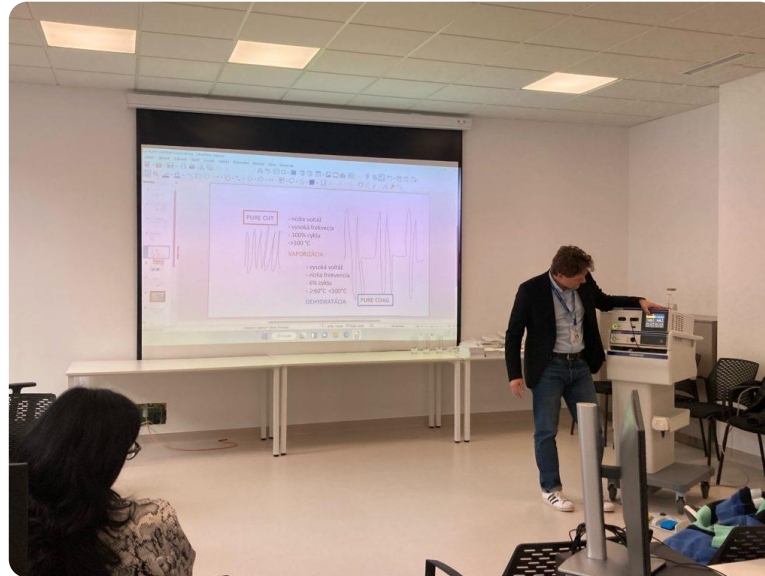


# INTEGRATED BED CAPACITY



- Achieving high bed occupancy thanks to the flexible bed management

# EDUCATIONAL FACILITIES



# IS THERE AN IDEAL SHAPE OF A HOSPITAL?

Proximity  
of related  
clinical zones  
and  
departments



Short  
transport  
routes

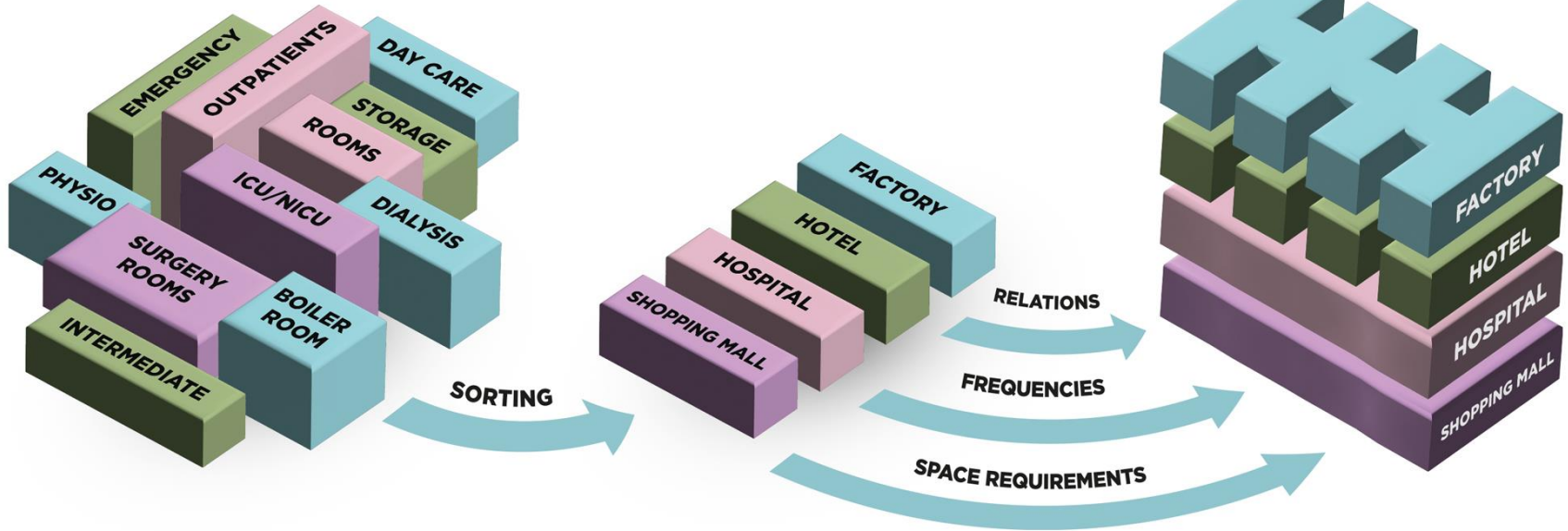
AND NOW  
THE GAME  
BEGINS



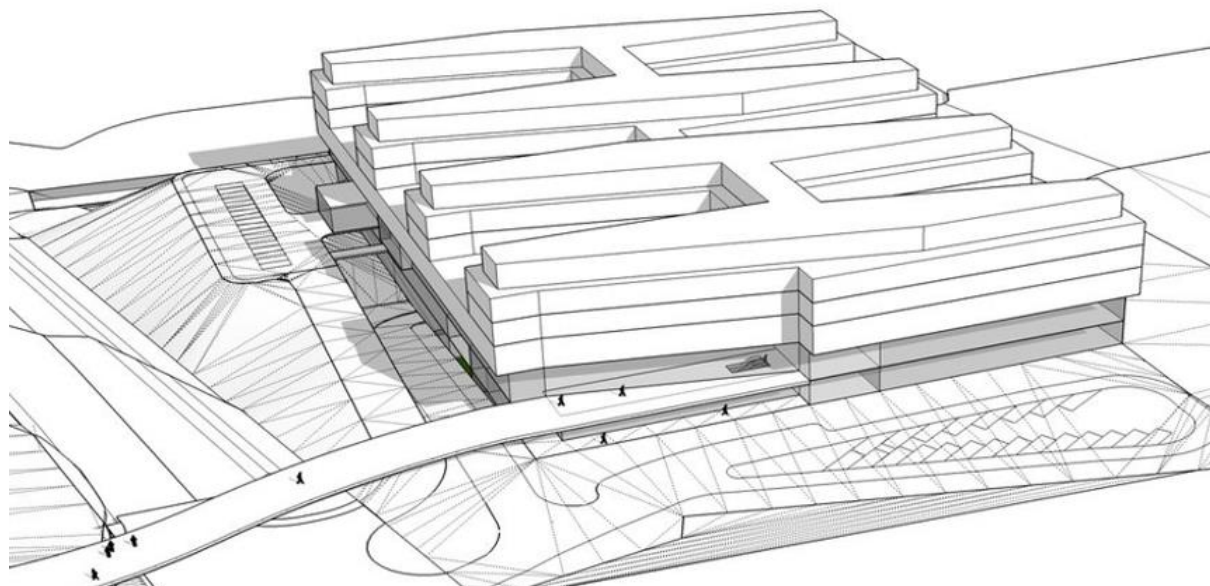
CITY



# HOW TO FIT IT ALL IN ONE BUILDING?



# WHAT ELSE FORMS ITS SHAPE?



*Size, shape and profile of the land*

Transport infrastructure

*Future extension plans*

Build-up area regulations

No. of entrances

Daylight requests

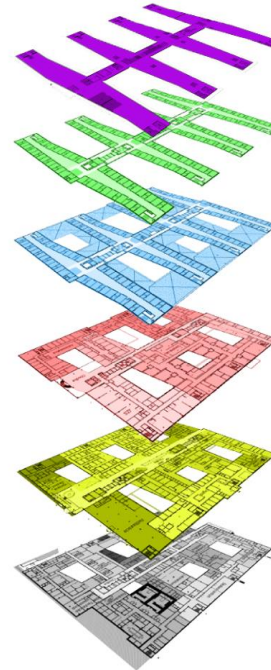
Parking requests

*Logistics requests*

No. of Floors

*Heliport*

# THIS IS HOW WE DID IT



**HELIPORT/  
TECHNICAL FLOOR**

**MEDICAL WARDS/  
MATERNITY**

**MEDICAL WARDS/  
INTERMEDIATE CARE**

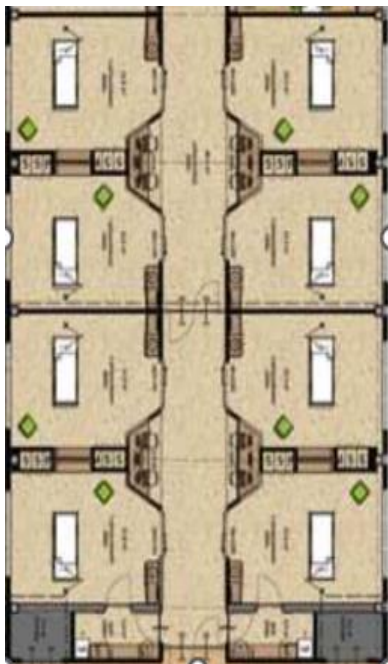
**HOT FLOOR/ OPERATION  
ROOMS/ DAY CARE/ ICU/  
NICU**

**OUTPATIENTS/  
EMERGENCY/ CATHLABS**

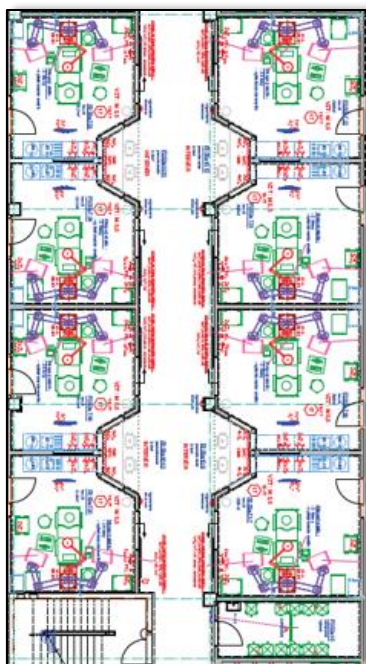
**RADIOTHERAPY/  
NUCLEAR MEDICINE/  
LOGISTICS/ KITCHEN**



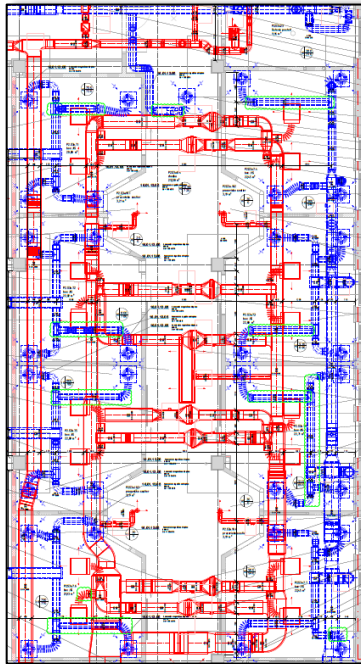
# FROM ARCHITECT'S STUDY TO 3D MODEL



Architectural study



Medical project



15 MEP professions



Interior design



# TECHNICAL DATASHEET



<b>Design phase:</b>	3 y
<b>Construction phase:</b>	4.5 y
<b>Project team:</b>	up to 50 people
<b>CM:</b>	+70 suppliers
<b>Construction workers:</b>	300 – 450/day
<b>GBA:</b>	53 000 m <sup>2</sup>
<b>Concrete:</b>	23.000m <sup>3</sup>
<b>Rooms:</b>	2671
<b>Windows:</b>	2486
<b>Cables:</b>	1.050km
<b>Pipes:</b>	126km
<b>Ventillation units:</b>	37
<b>Furniture:</b>	+10.000 pcs.
<b>Parking places:</b>	473



WHERE DID THE IDEA OF  
BUILDING A NEW HOSPITAL  
COME FROM?



# MICHALOVCE HOSPITAL THE OLD SKELETON



- A. To love
- B. To leave
- C. To change

# THE STORY BEGINS

- Svet zdravia Hospital Michalovce opened in 2017



# PRINCIPLES OF THE NEXT GENERATION HOSPITAL

1. Patient first focus
2. Continuous medical processes improvement
3. Healing environment architecture
4. Motivating work culture
5. Digitalisation
6. Effective running operations - centralisation
7. Readiness for future development



# BUSINESS PLAN



# RECRUITMENT STARTED IN 2020

<b>Doctors</b>	322
<b>Nurses</b>	440
<b>Other medical staff</b>	470
<b>Support stuff</b>	270

**1 500 employees**

\*Full operation, expected Spring 2024



# LARGEST PRIVATE INVESTMENT IN SLOVAK HEALTHCARE



<b>Construction</b>	110 mil. EUR
<b>Medical and non-medical equipment</b>	75 mil. EUR
<b>Testing, launch and project management</b>	55 mil. EUR
<b>Land</b>	5.5 mil. EUR

Approx.

**250 mil. EUR**